

# WTO Expert Symposium on Evaluation

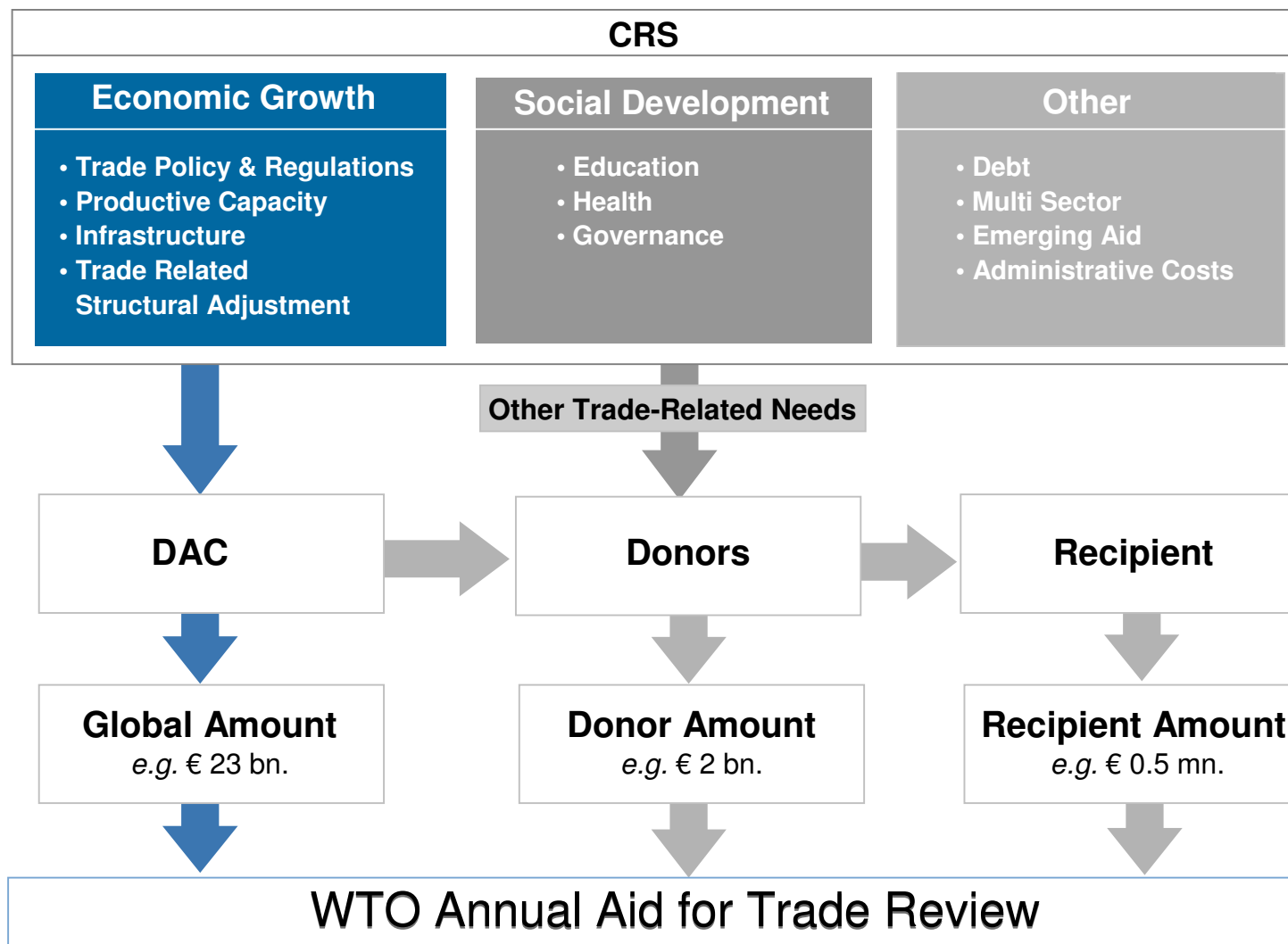
## Monitoring AfT flows



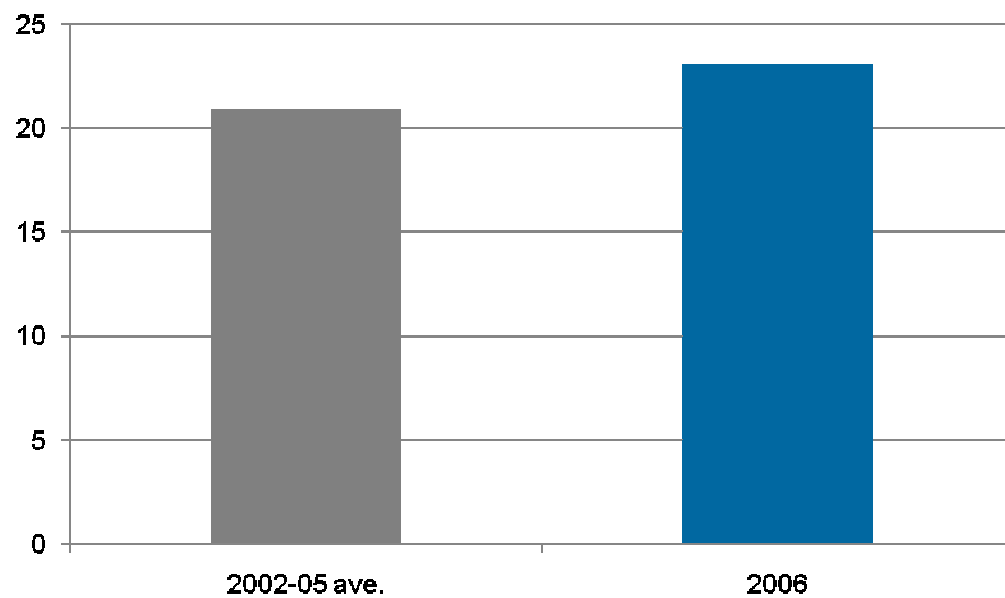
# Outline

- Why monitor aid for trade?
- How to monitor aid for trade?
- Aid for trade flows in 2006
  - Global flows
  - Sector distribution
  - Regional distribution
  - Main recipients
  - Main donors
  - Additionality
- Conclusions

# Tracking Global Flows Using the Creditor Reporting System (CRS)



# Aid for Trade Commitments

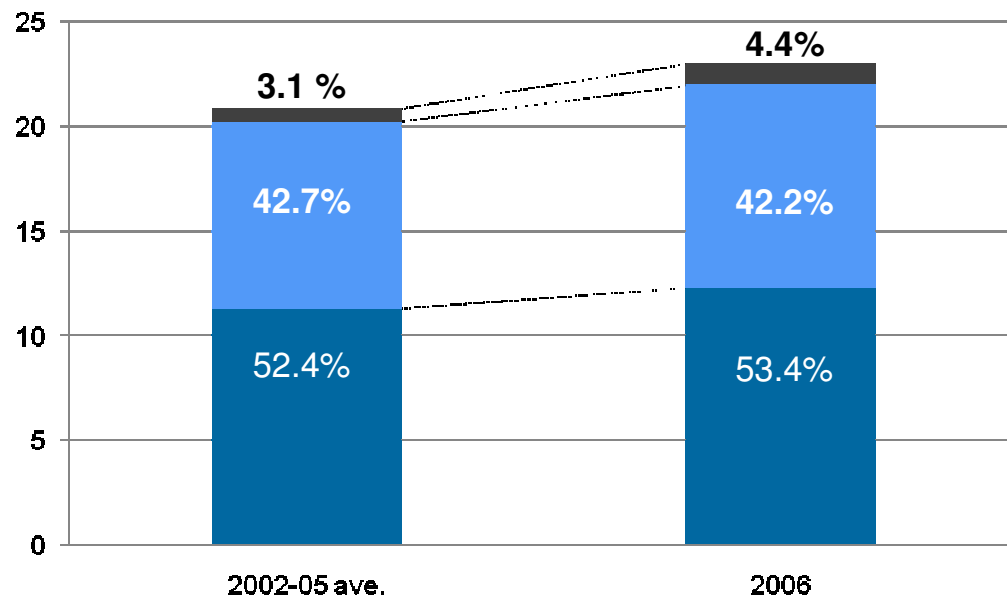


(USD billion, 2005 constant)

In 2006:

- 10% increase, or
- \$2.2 bn

# Sector Distribution



(USD billion, 2005 constant)

■ Infrastructure

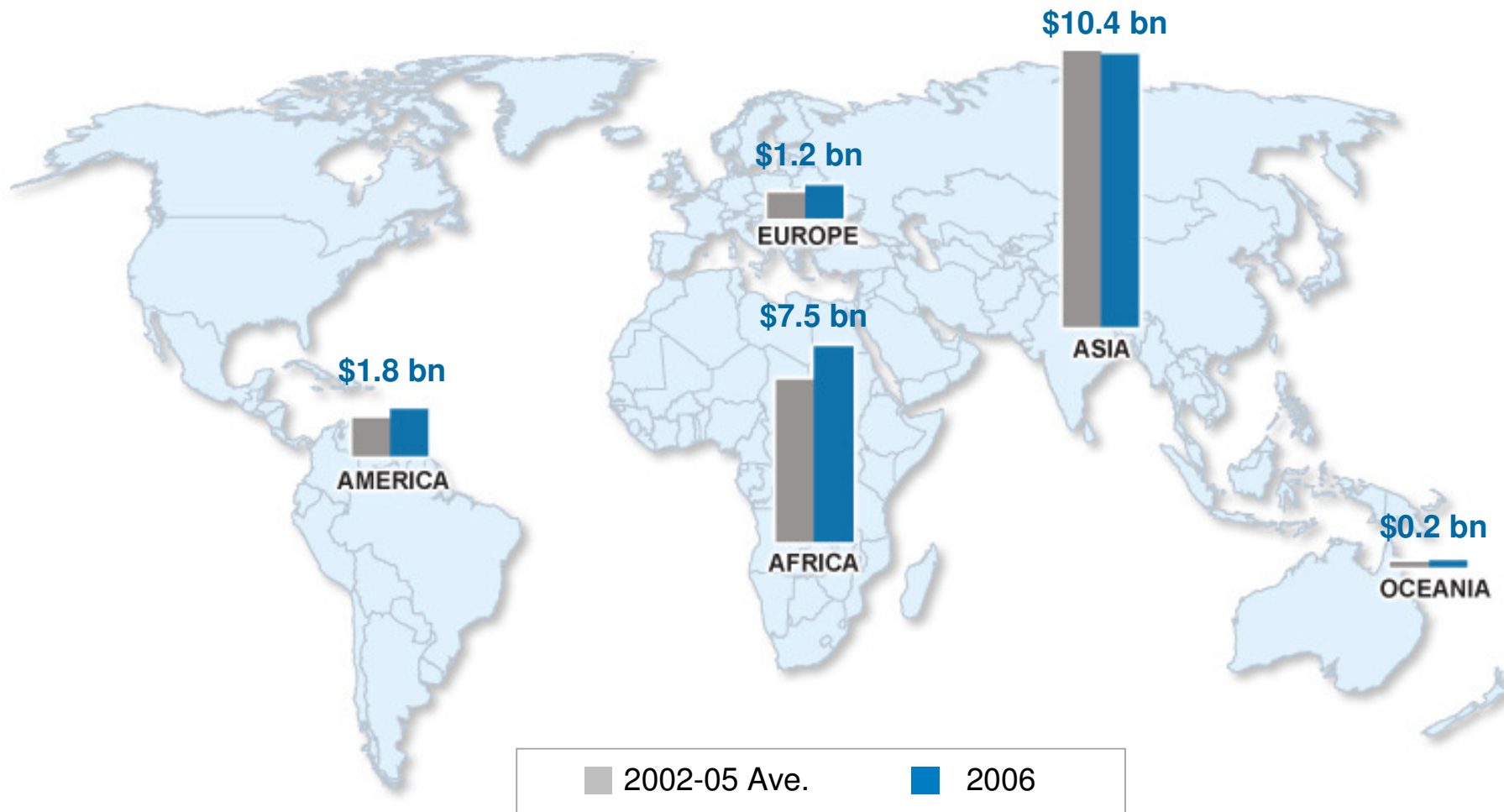
■ Productive Capacity Building

■ Trade Policy & Regulations

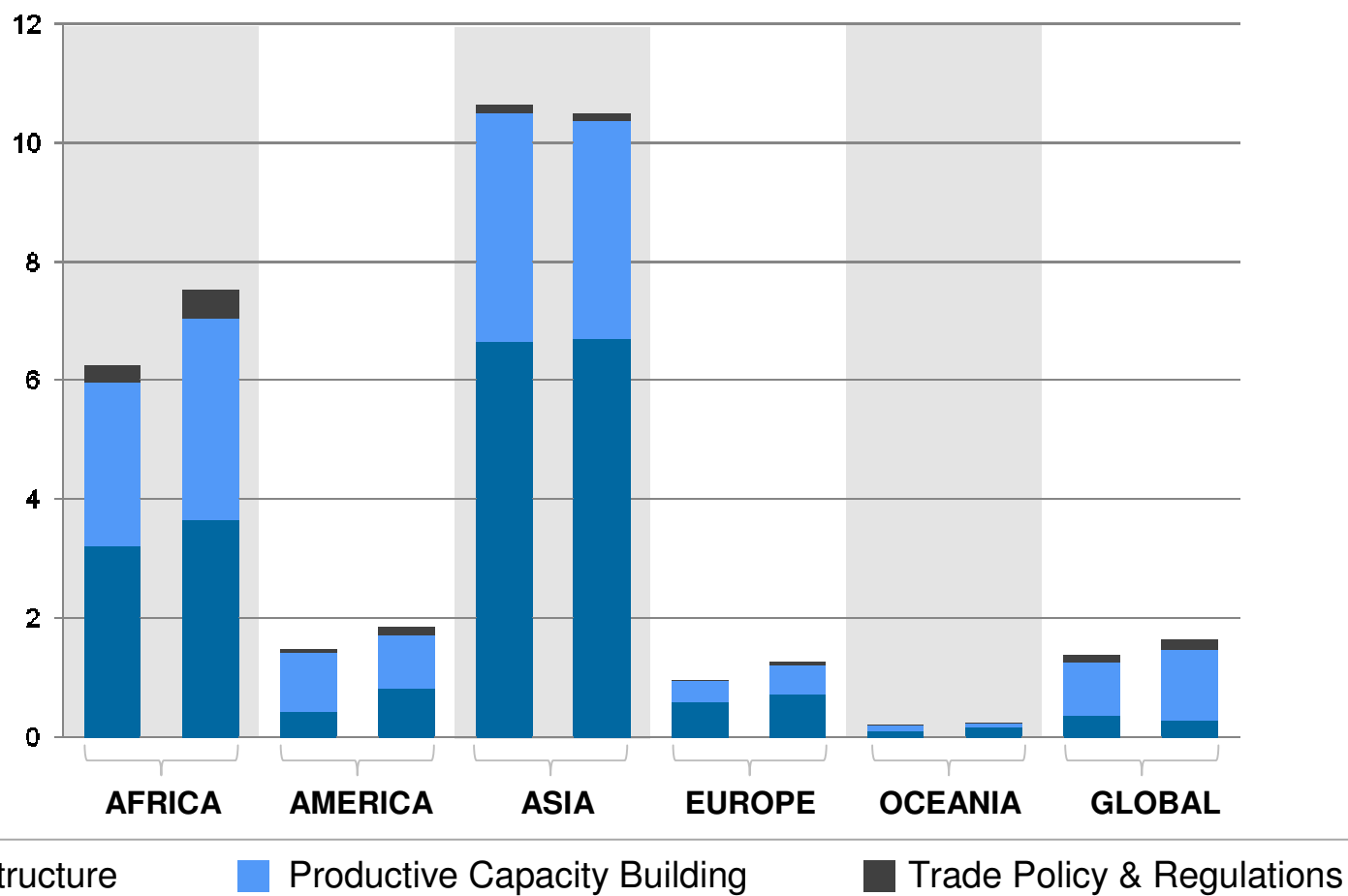
In 2006:

- Infra + \$1 bn
- PCB + \$0.8 bn
- TPR + \$0.4 bn

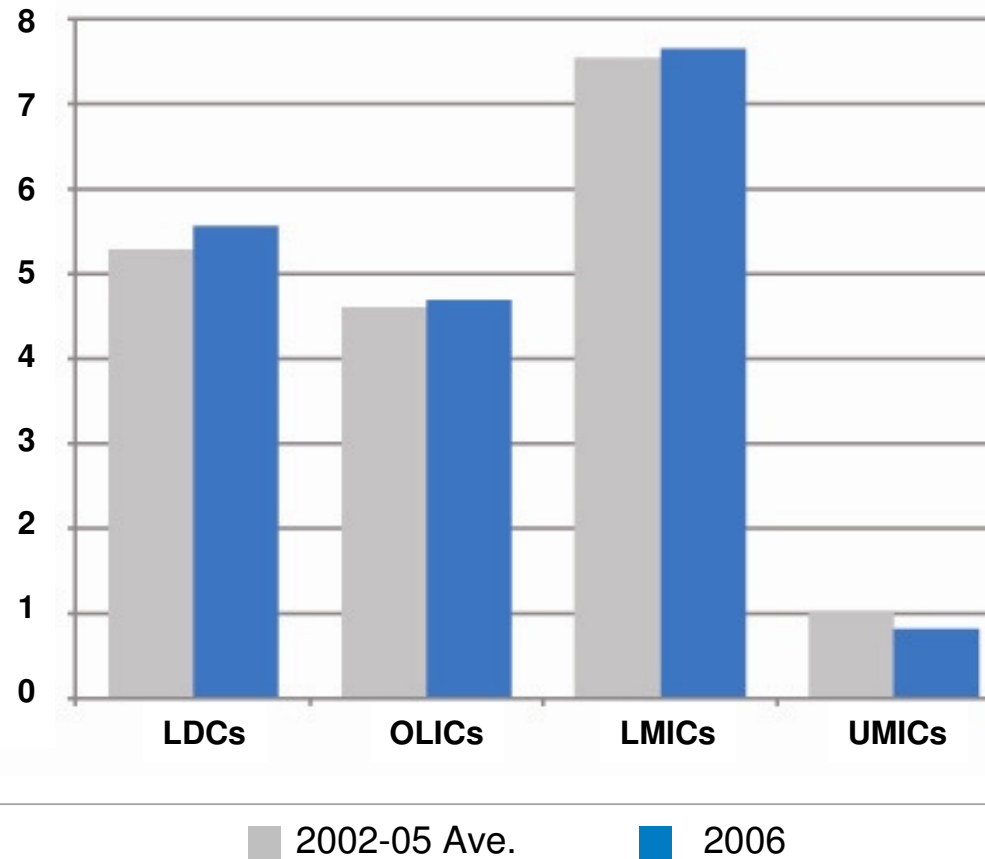
# Regional Distribution



# Regional and Sector Distribution



# Income Groups

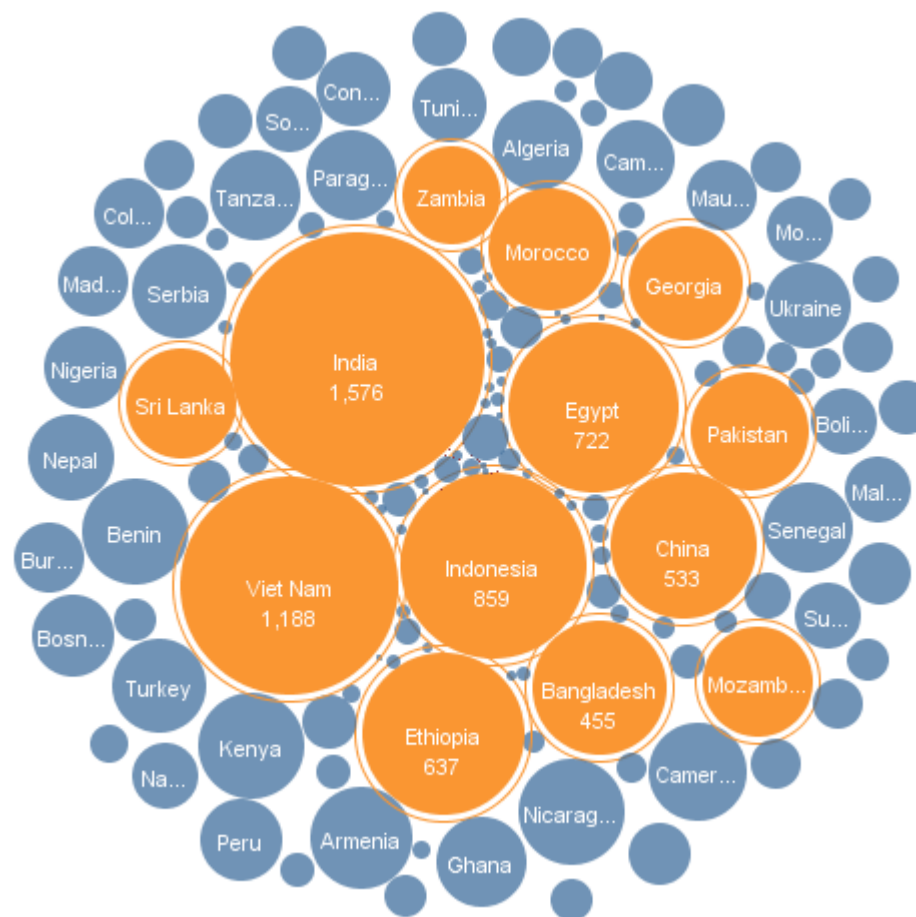


LDCs  
OLICs    GNI < \$825 per capita

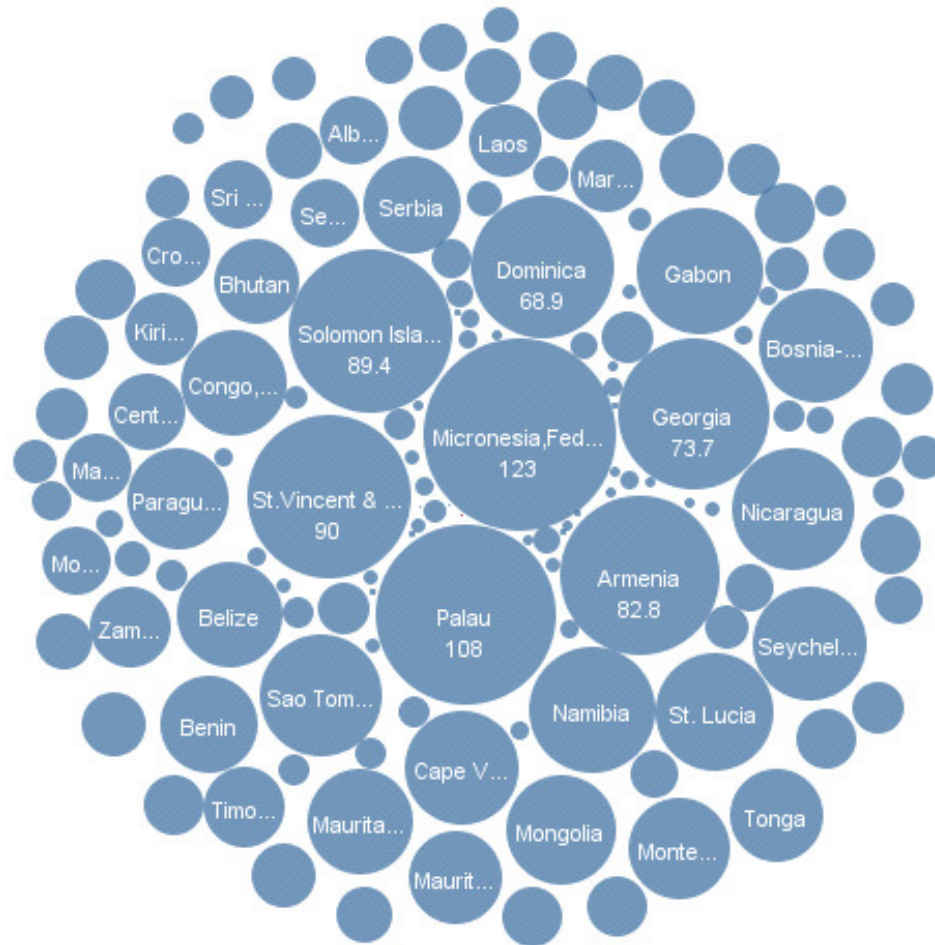
LMICs    \$825 < GNI < 3255  
LIMICs    \$3256 GNI < 10.065



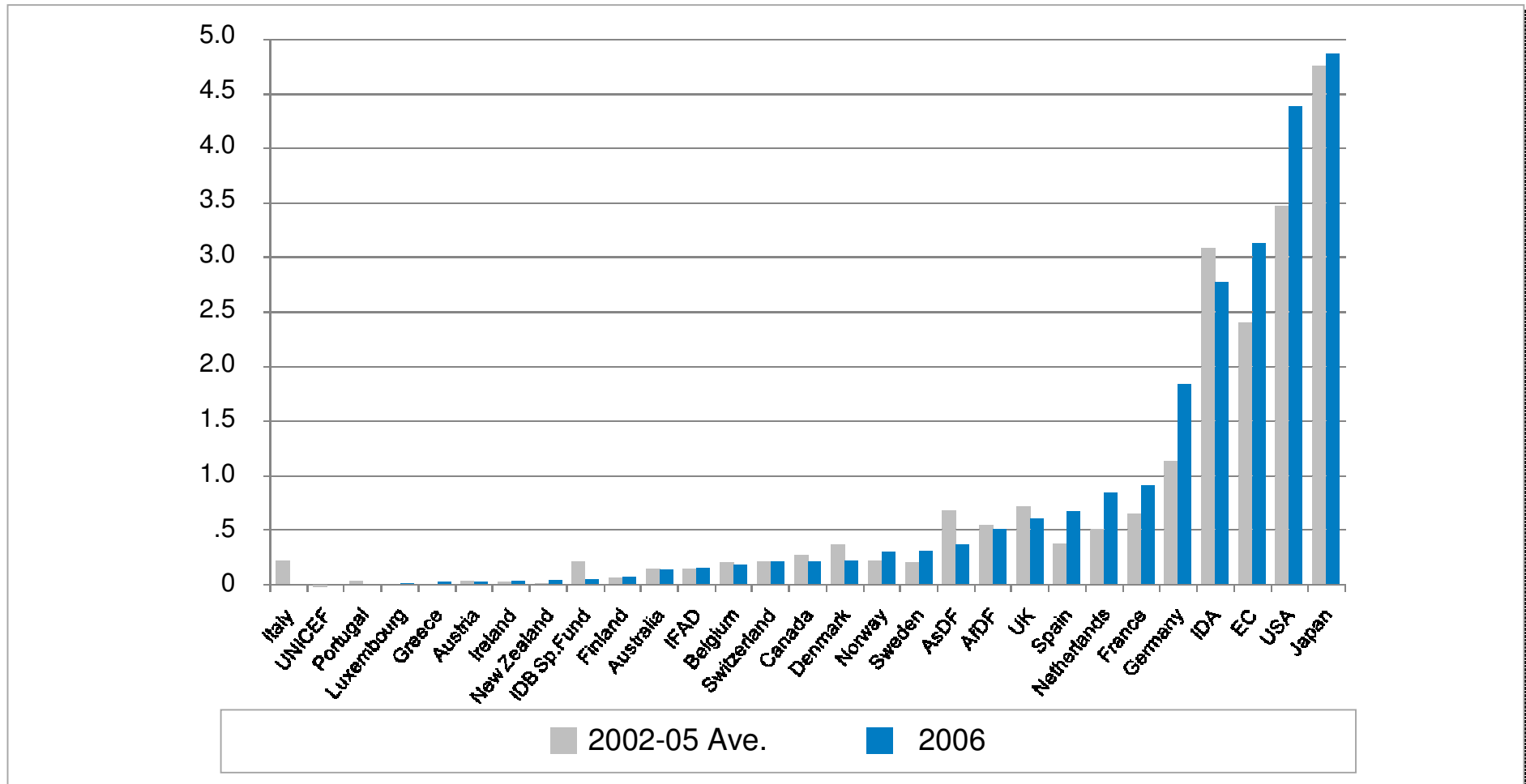
# Country Concentration: Volume



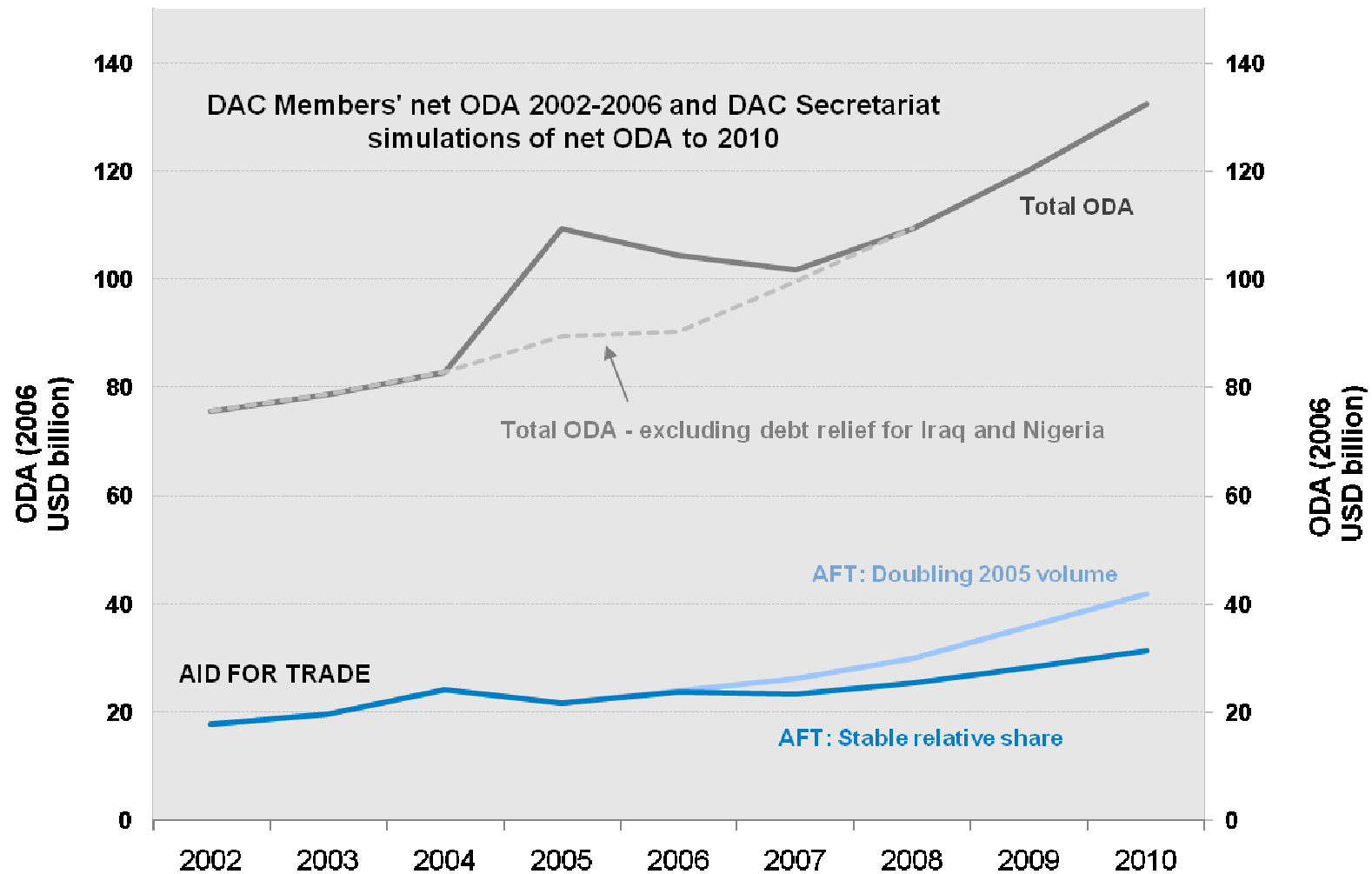
# Country Concentration: Per Capita



# Donors



# Additionality?



# Conclusions

## Aid for Trade in 2006

- Increased 10%
- Regional programmes doubled
- Additionality: positive outlook

# Food for thought

- **Expectations vs. Reality: how to manage this conundrum**
- **Impact assessments: by whom, when & national ownership.**
- **EIF vs. A4T: lessons learnt. Are formalised needs assessments the best way forward? Can 'solid commitments' coincide with the assessments?**
- **D`Cs vs LDCs: who's the true A4T 'customer'?**
- **Sectoral choices: mass impact vs. Innovation & technology (the Rabinovitz dilemma)**
- **Monitoring vs. Impact assessments as the engine for A4T discussions.**
- **Monitoring as an imperfect tool for forward planning: what alternatives?**